

ABOUT PAT SAJAK'S

C.O.D.E. LETTERS™

Check out the example puzzle to get a feel for how Pat's Code Letters puzzle-play system works . . .

If you're certain you know one of the coded letters, then you can fill that letter in on its corresponding coded spaces throughout the puzzle.

- Across
- 1 Financier
 - 6 Food consumer
 - 8 In the direction of
 - 9 Plop down
 - 11 Entire
 - 13 Type of hospital employee (abbr.)
 - 15 Gold unit
 - 18 Specifically

- Down
- 1 Flying mammals
 - 2 Orderly
 - 3 Kit _____
 - 4 Spielberg's alien
 - 5 Authentic
 - 10 Neighbor to Turkey and Iraq
 - 11 Wager
 - 12 Woman
 - 13 Hit hard
 - 17 Sun god



Pat Sajak's Code Letters puzzle-play system works with more than just crosswords. Regardless of the puzzle or game format, the same basic rules for filling in answers will apply.

In the example puzzle... →

All the squares with a circle = L



All the squares with a square = N



All the squares with a star = T



All the squares with a diamond = R



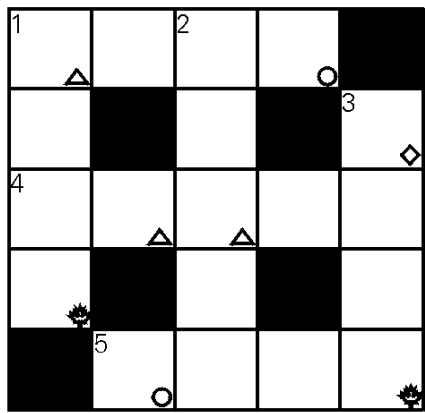
All the squares with a triangle = E



The Code Letters above apply to this example puzzle only. Other puzzles will have different Code Letters. You have to figure them out. When you do, you can fill them in throughout the puzzle.

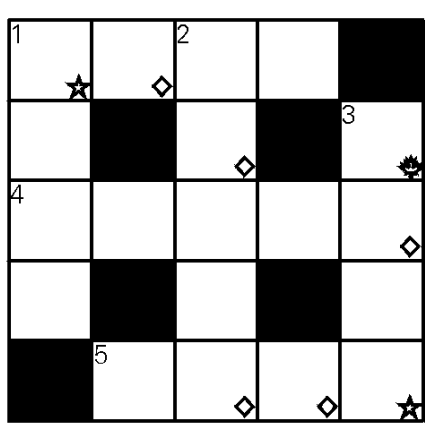
C.O.D.E. L.E.T.T.E.R.

**CROSSWORD
 CONNECTIONS**



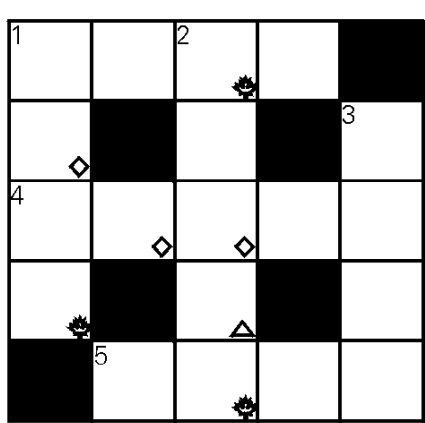
PUZZLE #1 CLUES

- 1a Flutter
- 4a Attach
- 5a Scheme
- 1d Smooth
- 2d Terrible
- 3d Way out



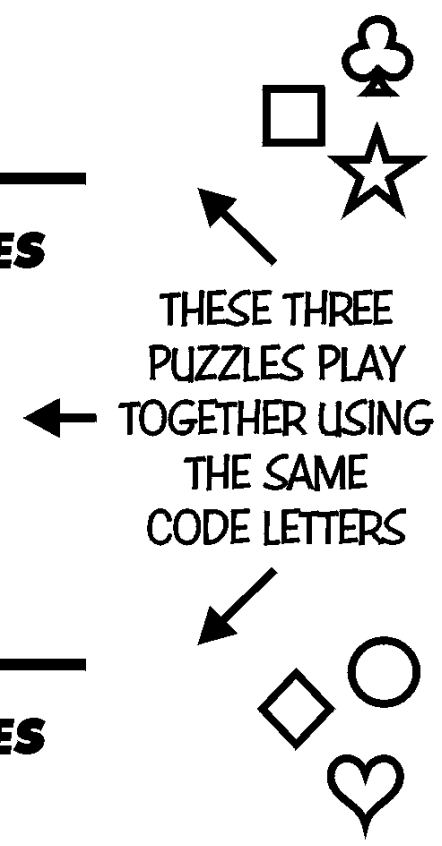
PUZZLE #2 CLUES

- 1a Connect
- 4a Beaver's den
- 5a Consider
- 1d Fungus
- 2d Rocky shelf
- 3d Time period



PUZZLE #3 CLUES

- 1a Tub
- 4a Parasite
- 5a One of 50
- 1d Hit
- 2d Larceny
- 3d Former Iran ruler



HERE'S A QUICK RIDDLE...
 What fish goes best with
 peanut butter?
Unscramble the
 mixed-up letters
 to form the
 answer.

YLJLSIHEF

□ □ □ □ □ □ □ □

PAT SAJAK'S

PUZZLES & GAMES

WEEKLY

CODE LETTER™

SCRAMBLES

Use the Code Letters to help unscramble the mixed-up letters to spell common words.

ERROCG

#1

		☀				☀
--	--	---	--	--	--	---

NEELKN

#6

						○
--	--	--	--	--	--	---

AFGULR

#2

		☀				○
--	--	---	--	--	--	---

DRCEUS

#7

			☀			
--	--	--	---	--	--	--

BLRIEM

#3

○	⊗	♥				☀
---	---	---	--	--	--	---

TEDILA

#8

					⊗	○
--	--	--	--	--	---	---

DLBIER

#4

		☀	⊗			○
--	--	---	---	--	--	---

RNOIMF

#9

⊗					☀	♥
---	--	--	--	--	---	---

CEMBOE

#5

					♥	
--	--	--	--	--	---	--

HOW DO YOU RANK?

Zero completed = F

One or two completed = D

Three or four completed = C

Five completed = B

Six completed = B+

Seven completed = A-

Eight completed = A

Nine completed = A+

C.O.D.E. LETTER™ RIDDLES

RIDDLE: What has a big mouth but doesn't say a word?

Use the Code Letters to help solve the riddles.

#1

△	■		☀			
---	---	--	---	--	--	--

RIDDLE: What has a head, can't think, but drives?

#2

△	■	○	△	♡	♡		
---	---	---	---	---	---	--	--

RIDDLE: What happened to the sardine when it didn't show up for work?

#3

☀	☀	■	□	△	■		△	◇	◇		
---	---	---	---	---	---	--	---	---	---	--	--

RIDDLE: What is always coming but never arrives?

#4

☀		♡					□
---	--	---	--	--	--	--	---

RIDDLE: What branch of the army do babies join?

#5

☀	○		■	☀	◇	☆	△	◇	☀		
---	---	--	---	---	---	---	---	---	---	--	--

RIDDLE: If fish lived on land, where would they live?

#6

☀	◇	■	☆	☀	◇		△	◇	
---	---	---	---	---	---	--	---	---	--

PAT SAJAK'S

PUZZLES & GAMES

WEEKLY

CODE LETTER™

PUZZLE CONNECTIONS

Use the Code Letters to help fill in the answers in all three sections.

ALL THREE
SECTIONS PLAY
TOGETHER USING
THE SAME
CODE LETTERS

CLUES

1a Group

4a Furry
carnivore

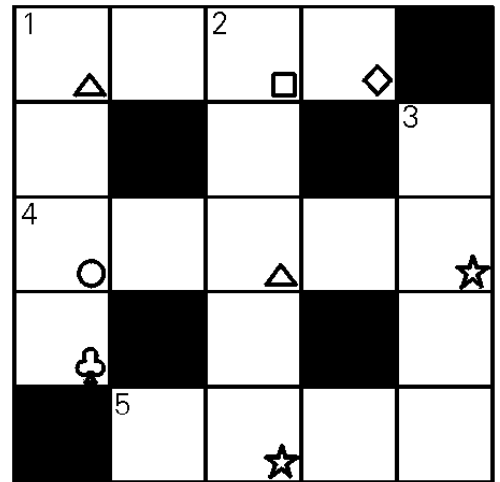
5a Reveal

1d Strike

2d Meritorious

3d Healthy

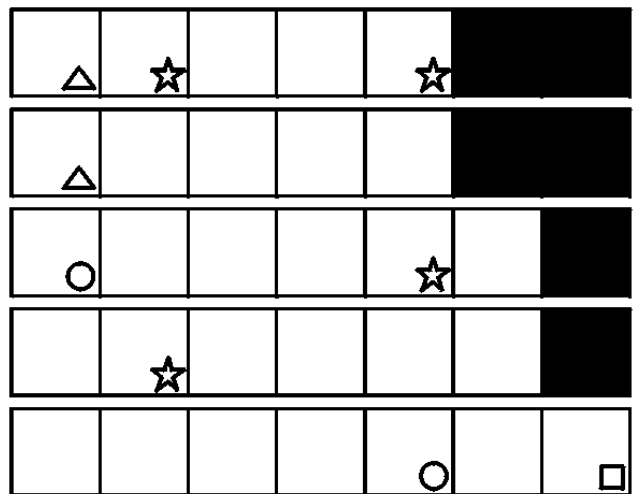
CROSSWORD



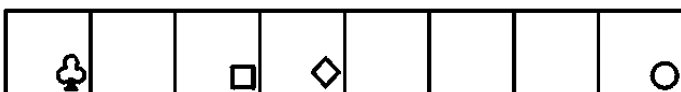
SURROUND-ABOUT-WORDS

S	A	E	X	E	W	H	T	R	F	J
F	W	A	O	O	F	D	E	Z	E	X
L	G	F	L	J	H	V	K	P	G	U
K	B	L	P	B	L	A	C	K	I	F
J	E	C	R	I	M	S	O	N	E	A
Y	P	Z	S	C	J	D	F	X	B	P

Find . . . The names of FIVE COLORS.
Fill your answers in below and circle
your answers in the grid.



TRIVIA



Trivia: This is the the second-largest
country in Central America.

PAT SAJAK'S
PUZZLES & GAMES
 WEEKLY

C.O.D.E. LETTER™
PERSON, PLACE AND THING

Use the Code Letters to help solve the mystery answers.

ALL THREE PUZZLES USE THE SAME CODES

PERSON

			T♣		Q★	♣		□			
				◇	♥	♥	◇	R♠	□	Q★	

CLUE: This man died on the Fourth of July in 1826.

PLACE

	R♠	Q★	○	♣	◇	♥	◇			◇	R♠
			○	◇		T♣	◇	R♠			

CLUE: Much of this complex was built between 1931 and 1939.

THING

		T♣			◇		□	T♣	Q★	○	♣
				♣		R♠	♣	◇	T♣		

CLUE: The origin to this important institution in New York City dates all the way back to the 1790s.

PAT SAJAK'S
PUZZLES & GAMES
 WEEKLY

PAT SAJAK'S
TRIVIA GEMS™

Wager between 0 and 100 points per question. Score positive wagered points for questions answered correctly and score negative points for questions answered incorrectly.

Challenge a friend. The player with the highest point total wins.

Your Answer Points Wagered +/- Subtotals

#1 Will you need a rake? If you plant a deciduous tree in your yard, will it drop its leaves in the winter?
 Yes or No

--	--	--

#2 Someone double-dares you to jump the widest point of the Grand Canyon on a motorcycle. You stupidly agree. Approximately how far will you be attempting to jump (before likely falling to your demise short of your goal)?
 A) 1 mile B) 6 miles C) 18 miles

--	--	--

#3 You see a sea cow swimming in a warm river (which is where they like to swim). What are you looking at?
 A) A hippo B) An alligator C) A manatee

--	--	--

#4 A really, really rich uncle got your kids a solid gold swing set for your backyard. You can't help but wonder, "Will this very valuable swing set rust if it's left out in the rain?"
 A) No, gold doesn't rust
 B) Yes, it can rust if left out in the rain long enough

--	--	--

#5 Who needs a lawnmower? If you find a zebu grazing in your yard, what's eating your grass?
 A) A member of the cattle family
 B) A type of horse C) A type of bird

--	--	--

HOW DO YOU RANK?

-700 to -1 pts. = F	301 to 400 pts. = B+
0 to 100 pts. = D	401 to 430 pts. = A-
101 to 200 pts. = C	431 to 470 pts. = A
201 to 300 pts. = B	471 to 500 pts. = A+

TOTAL POINTS WON/LOST: